



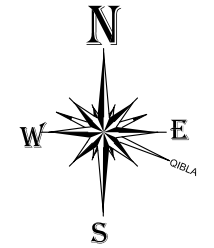
CONSULTANTS

Atif nazar associates

CONSULTING ENGINEERS, ARCHITECTS
PLANNERS AND PROJECT MANAGERS.
B-28, BLOCK NO-15, GULSHAN-E-IQBAL, KARACHI.
P.H. 021-34982561

CLIENT

**Health Department,
Government of Sindh**



KEY PLAN

REVISION			
NO.	DATE	DESCRIPTION	REV. BY

DESIGN BY ARCH. NUZHAT	DRAWN BY NOMAN.A
CHECKED / CO-ORDINATED Atif Nazar	APPROVED BY -

PROJECT
**Mother & Children Hospital
at Mirpur Sakro, Thatta**

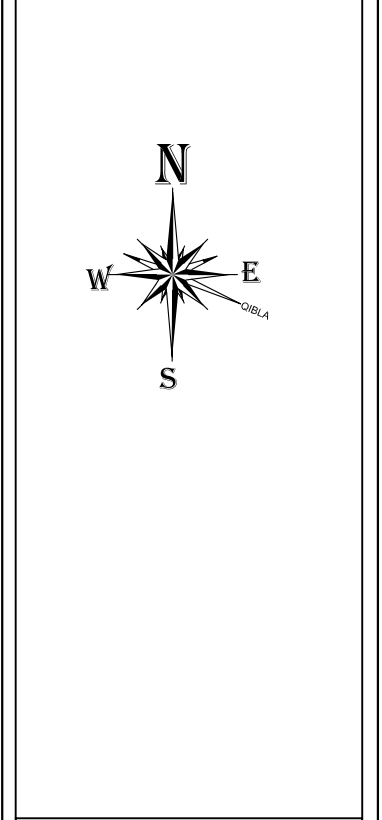
TITLE
GRID PLAN

PROJECT CODE MCH	SCALE NTS	JOB NO. P-1223
DRAWING NO. MCH-AR-201	REVISION 0	
DATE 28-04-2015	PLOT SCALE A3	



CONSULTANTS
Atif nazar associates
 CONSULTING ENGINEERS, ARCHITECTS
 PLANNERS AND PROJECT MANAGERS.
 B-28, BLOCK NO-15, GULSHAN-E-JOBAL, KARACHI.
 P.H. 021-34982561

CLIENT
**Health Department,
 Government of Sindh**



KEY PLAN

REVISION			
NO.	DATE	DESCRIPTION	REV. BY

DESIGN BY AR. NOMAN ALVI	DRAWN BY NOMAN.A
CHECKED / CO-ORDINATED Atif Nazar	APPROVED BY -

PROJECT
**Mother & Children Hospital
 at Mirpur Sakro, Thatta**

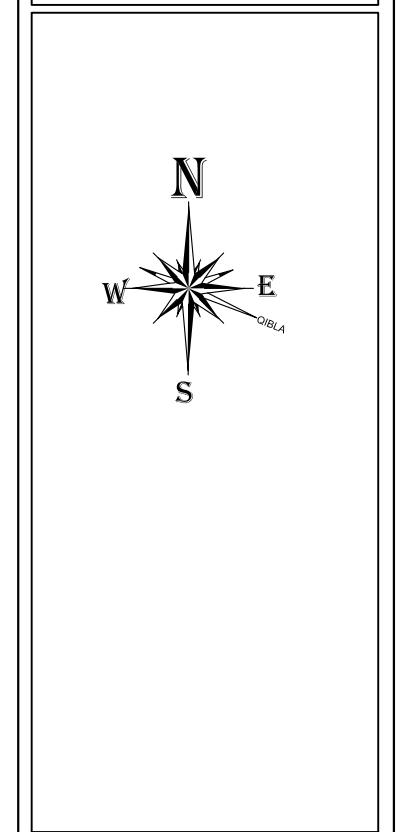
TITLE
**GROUND FLOOR
 PART PLAN - A**

PROJECT CODE MCH	SCALE NTS	JOB NO. P-1223
DRAWING NO. MCH-AR-202	REVISION 0	
DATE 28-04-2015	PLOT SCALE A3	



CONSULTANTS
Atif nazar associates
 CONSULTING ENGINEERS, ARCHITECTS
 PLANNERS AND PROJECT MANAGERS.
 B-28, BLOCK NO-15, GULSHAN-E-JOBAL, KARACHI.
 P.H. 021-34982561

CLIENT
**Health Department,
 Government of Sindh**



KEY PLAN

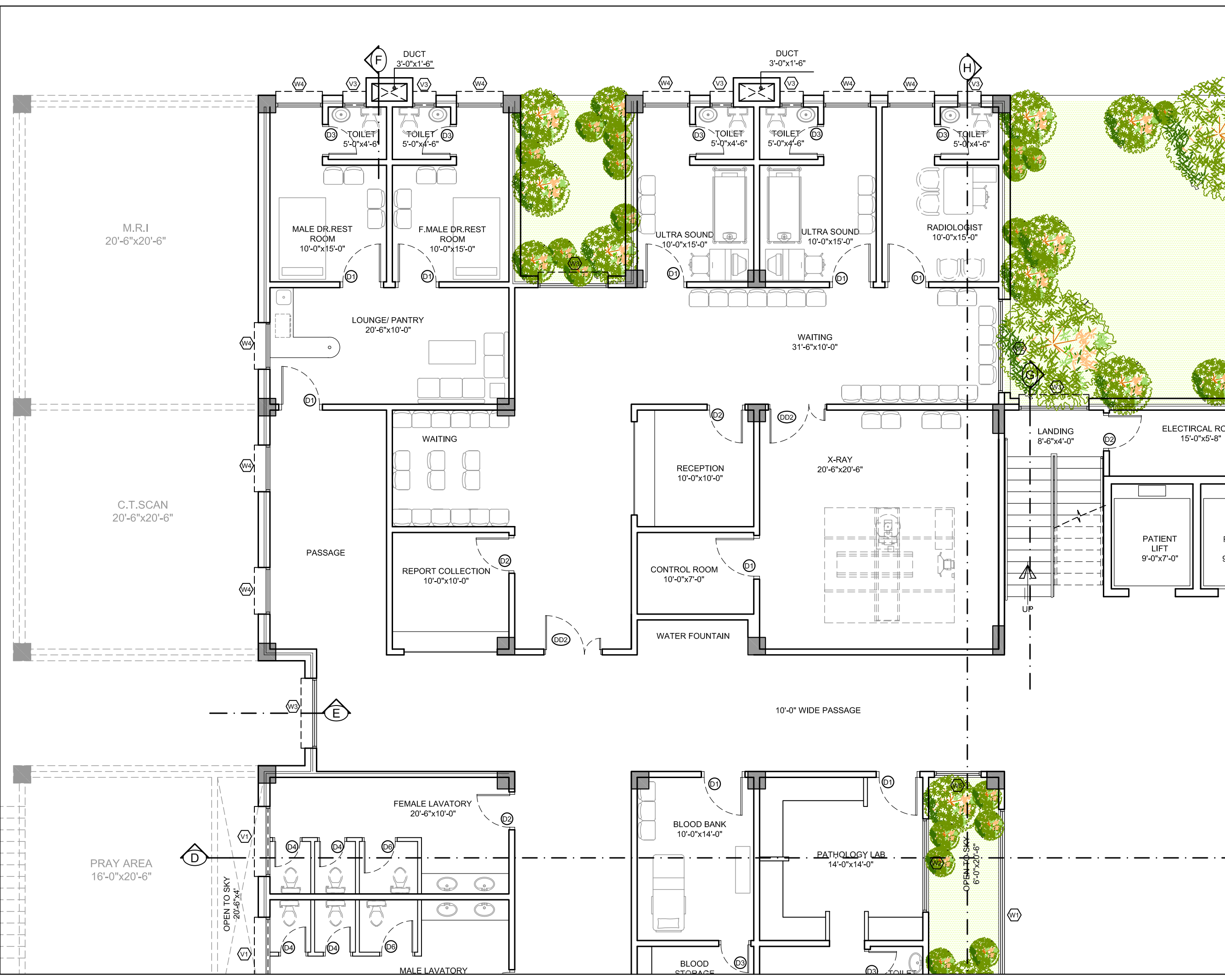
NO.	DATE	DESCRIPTION	REV. BY
-	-	-	-
-	-	-	-
-	-	-	-
-	-	-	-

DESIGN BY AR. NOMAN ALVI	DRAWN BY NOMAN.A
CHECKED / CO-ORDINATED Atif Nazar	APPROVED BY -

PROJECT
**Mother & Children Hospital
 at Mirpur Sakro, Thatta**

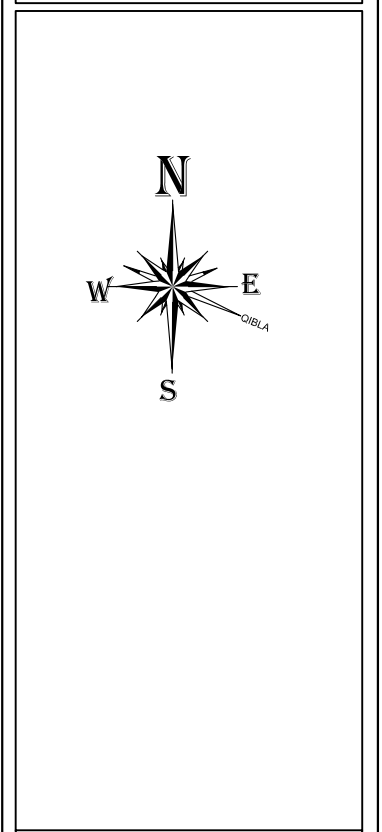
TITLE
**GROUND FLOOR
 PART PLAN - A**

PROJECT CODE MCH	SCALE NTS	JOB NO. P-1223
DRAWING NO. MCH-AR-203	REVISION 0	
DATE 28-04-2015	PLOT SCALE A3	



CONSULTANTS
Atif nazar associates
 CONSULTING ENGINEERS, ARCHITECTS
 PLANNERS AND PROJECT MANAGERS.
 B-28, BLOCK NO-15, GULSHAN-E-JOBAL, KARACHI.
 P.H. 021-34982561

CLIENT
**Health Department,
 Government of Sindh**



KEY PLAN

NO.	DATE	DESCRIPTION	REV.	BY

DESIGN BY AR. NOMAN ALVI	DRAWN BY NOMAN.A
CHECKED / CO-ORDINATED Atif Nazar	APPROVED BY -

PROJECT
**Mother & Children Hospital
 at Mirpur Sakro, Thatta**

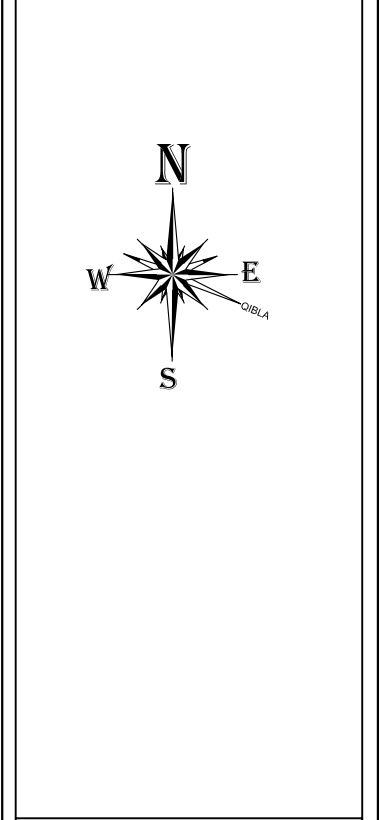
TITLE
**GROUND FLOOR
 PART PLAN - A**

PROJECT CODE MCH	SCALE NTS	JOB NO. P-1223
DRAWING NO. MCH-AR-204	REVISION 0	
DATE 28-04-2015	PLOT SCALE A3	



CONSULTANTS
Atif nazar associates
 CONSULTING ENGINEERS, ARCHITECTS
 PLANNERS AND PROJECT MANAGERS.
 B-28, BLOCK NO-15, GULSHAN-E-JOBAL, KARACHI.
 P.H. 021-34982561

CLIENT
**Health Department,
 Government of Sindh**



KEY PLAN

NO.	DATE	DESCRIPTION	REV. BY
-	-	-	-
-	-	-	-
-	-	-	-

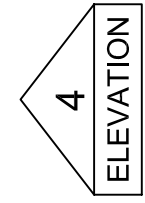
DESIGN BY AR. NOMAN ALVI	DRAWN BY NOMAN.A
CHECKED / CO-ORDINATED Atif Nazar	APPROVED BY -

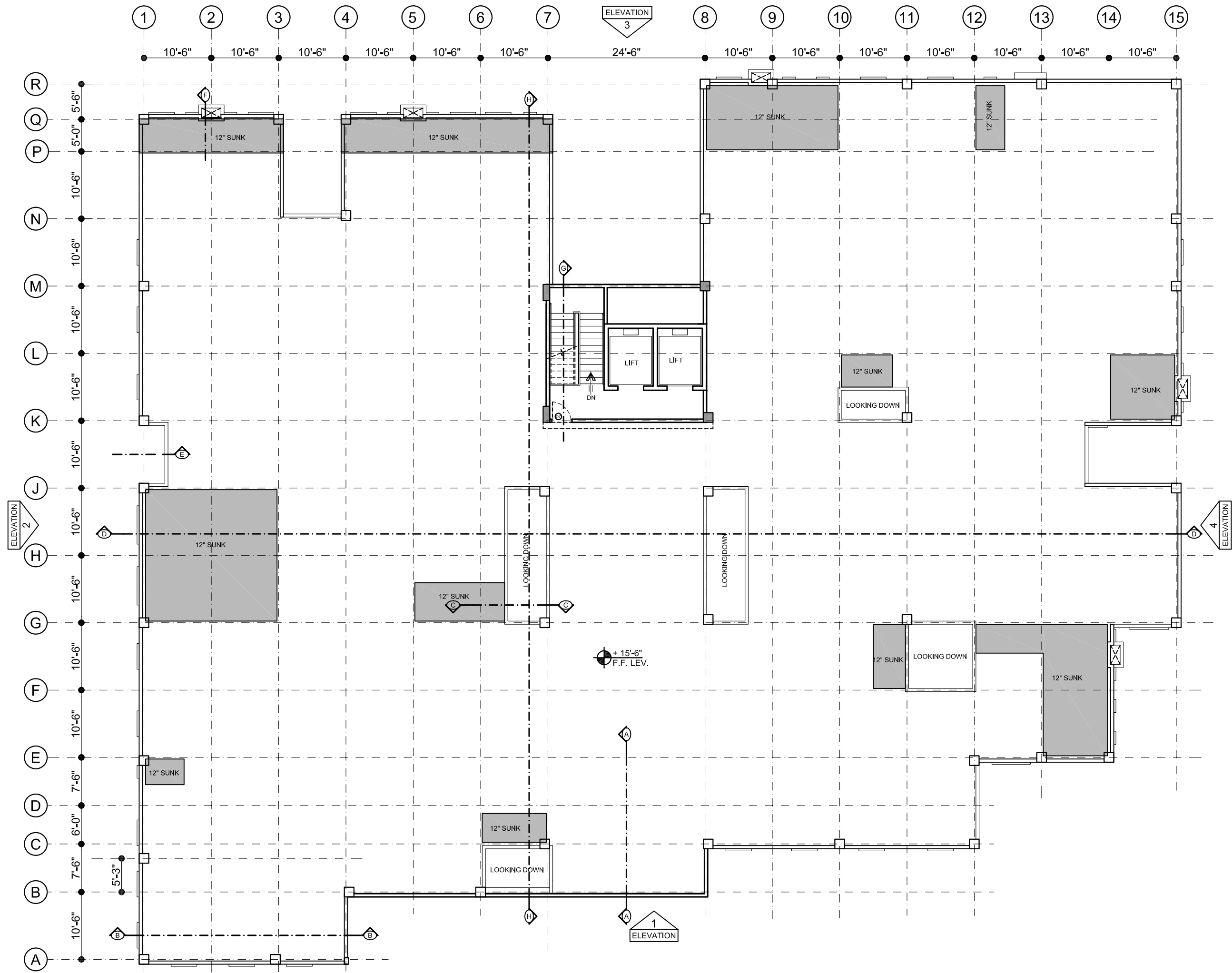
PROJECT
**Mother & Children Hospital
 at Mirpur Sakro, Thatta**

TITLE
**GROUND FLOOR
 PART PLAN - A**

PROJECT CODE MCH	SCALE NTS	JOB NO. P-1223
DRAWING NO. MCH-AR-205	REVISION 0	
DATE 28-04-2015	PLOT SCALE A3	

FUTURE
EXTENSION





CONSULTANTS
Atif nazar associates
 CONSULTING ENGINEERS, ARCHITECTS
 PLANNERS AND PROJECT MANAGERS.
 B-28, BLOCK NO-15, GULSHAN-E-IQBAL, KARACHI.
 P.H. 021-34982561

CLIENT
**Health Department,
 Government of Sindh**

KEY PLAN

REVISION			
NO.	DATE	DESCRIPTION	REV. BY

DESIGN BY ARCH. NUZHAT	DRAWN BY NOMAN.A
CHECKED / CO-ORDINATED Atif Nazar	APPROVED BY -

PROJECT
**Mother & Children Hospital
 at Mirpur Sakro, Thatta**

TITLE
ROOF PLAN

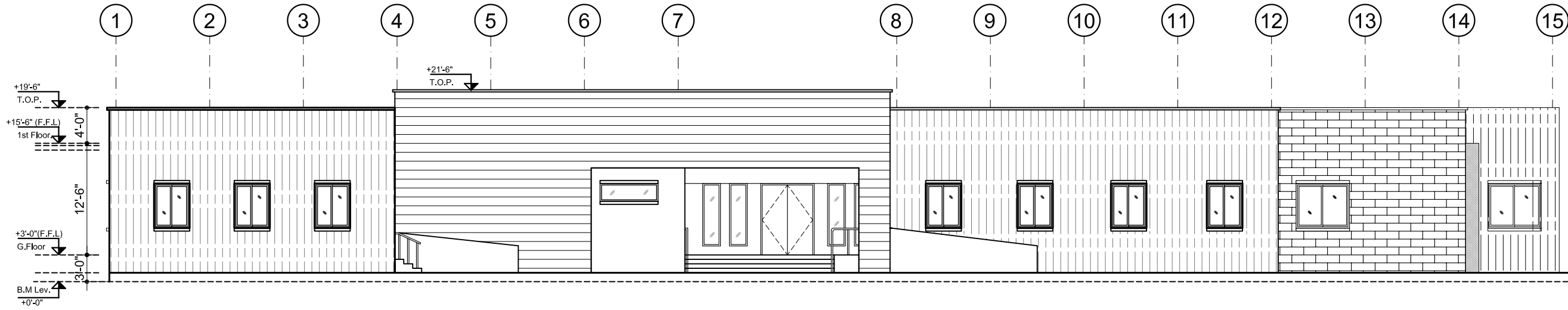
PROJECT CODE MCH	SCALE NTS	JOB NO. P-1223
DRAWING NO. MCH-AR-206	REVISION 0	
DATE 28-04-2015	PLOT SCALE A3	

CONSULTANTS

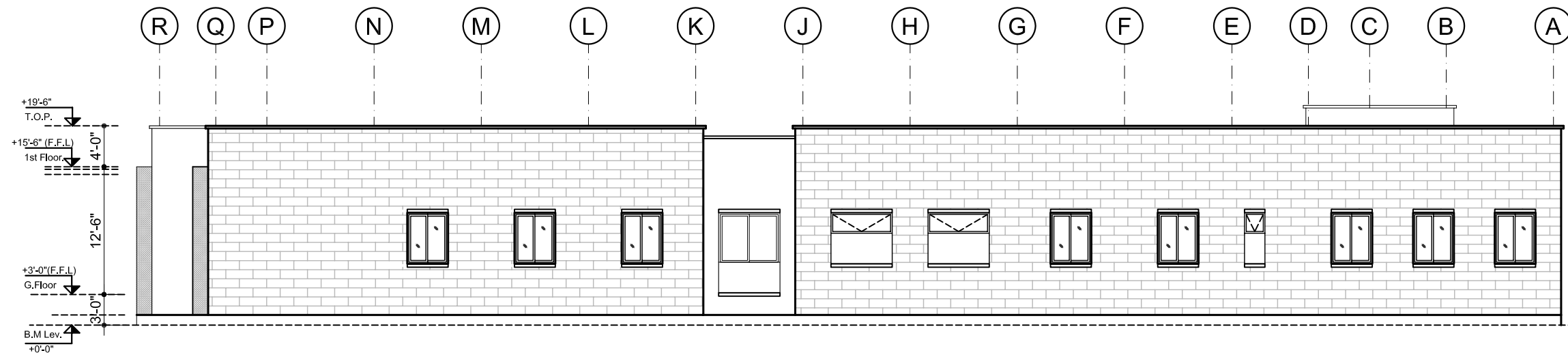
Atif nazar associates
 CONSULTING ENGINEERS, ARCHITECTS
 PLANNERS AND PROJECT MANAGERS.
 A-3 & 4, SB-14, BLOCK NO-13-B,
 GULSHAN-E-IOBAL, KARACHI.
 P.H. 34820497 - 34982561

CLIENT

**Health Department,
 Government of Sindh**



ELEVATION 01



ELEVATION 02

KEY PLAN

NO.	DATE	DESCRIPTION	REV. BY

DESIGN BY ARCH. NUZHAT	DRAWN BY NOMAN.ALVI
CHECKED / CO-ORDINATED Atif Nazar	APPROVED BY -

PROJECT
**Mother & Children Hospital
 at Mirpur Sakro, Thatta**

TITLE
ELEVATIONS 1 & 2

PROJECT CODE MCH	SCALE NTS	JOB NO. P-1223
DRAWING NO. MCH-AR-301	REVISION 0	
DATE 28-04-2015	PLOT SCALE A3	

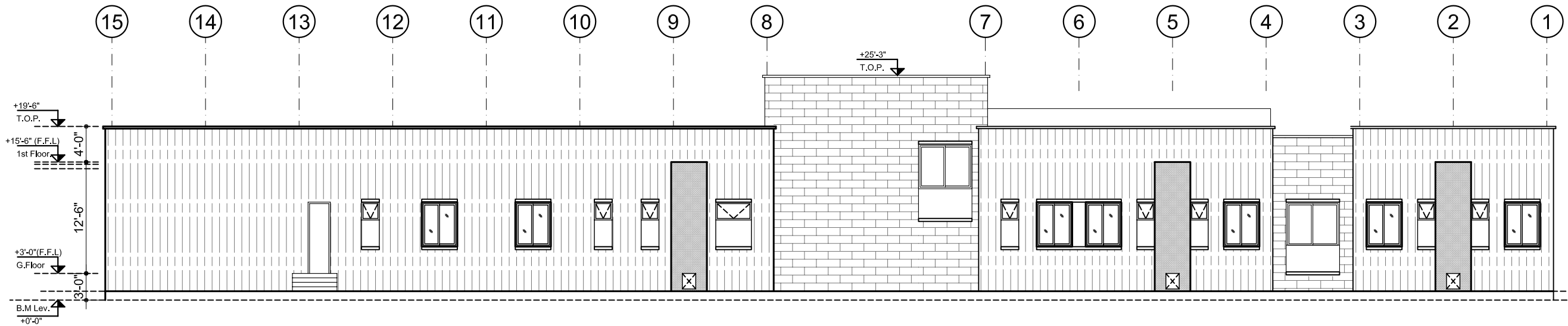
CONSULTANTS

Atif nazar associates

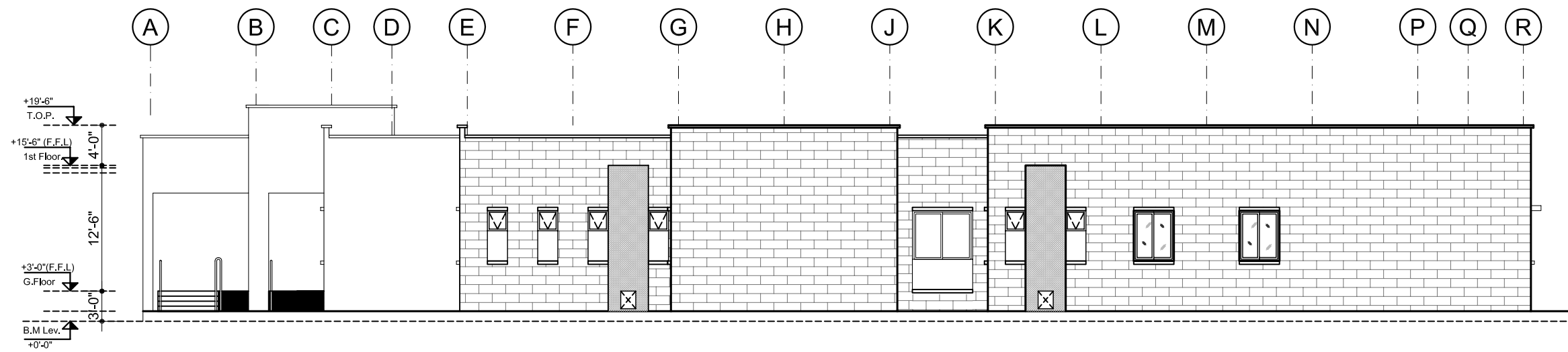
CONSULTING ENGINEERS, ARCHITECTS
 PLANNERS AND PROJECT MANAGERS.
 A-3 & 4, SB-14, BLOCK NO-13-B,
 GULSHAN-E-IOBAL, KARACHI,
 P.H. 34820497 - 34982561

CLIENT

**Health Department,
 Government of Sindh**



ELEVATION 03



ELEVATION 04

KEY PLAN

NO.	DATE	DESCRIPTION	REV. BY

DESIGN BY ARCH. NUZHAT	DRAWN BY NOMAN.ALVI
CHECKED / CO-ORDINATED Atif Nazar	APPROVED BY -

PROJECT
**Mother & Children Hospital
 at Mirpur Sakro, Thatta**

TITLE
ELEVATIONS 3 & 4

PROJECT CODE MCH	SCALE NTS	JOB NO. P-1223
DRAWING NO. MCH-AR-302	REVISION 0	DATE 28-04-2015
	PLOT SCALE A3	

CONSULTANTS

Atif nazar associates

CONSULTING ENGINEERS, ARCHITECTS
 PLANNERS AND PROJECT MANAGERS.
 A-3 & 4, SB-14, BLOCK NO-13-B,
 GULSHAN-E-IOBAL, KARACHI,
 P.H. 34820497 - 34982561

CLIENT

**Health Department,
 Government of Sindh**

KEY PLAN

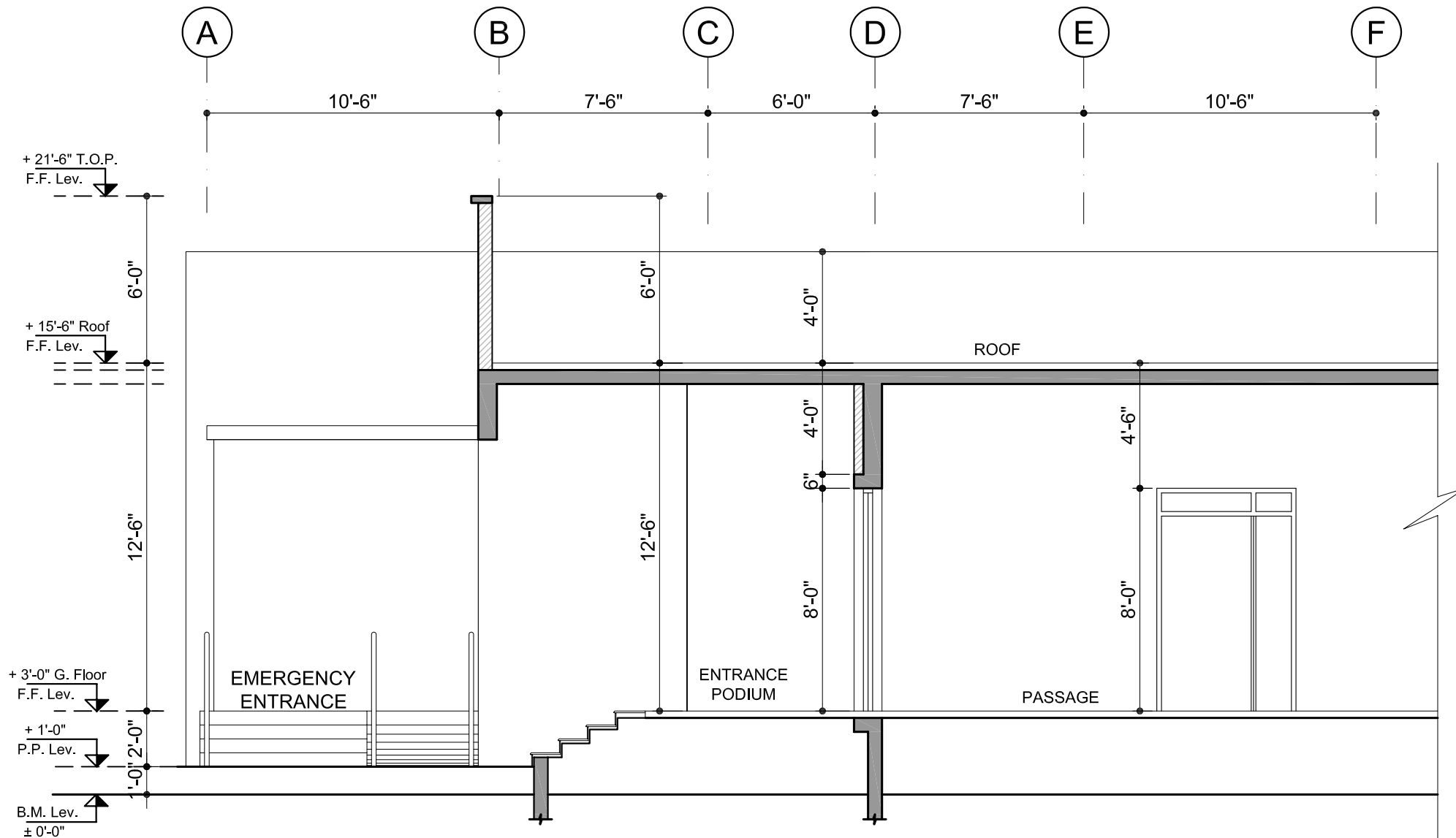
REVISION			
NO.	DATE	DESCRIPTION	REV. BY

DESIGN BY ARCH. NUZHAT	DRAWN BY NOMAN.A
CHECKED / CO-ORDINATED Atif Nazar	APPROVED BY -

PROJECT
**Mother & Children Hospital
 at Mirpur Sakro, Thatta**

TITLE
SECTION - A

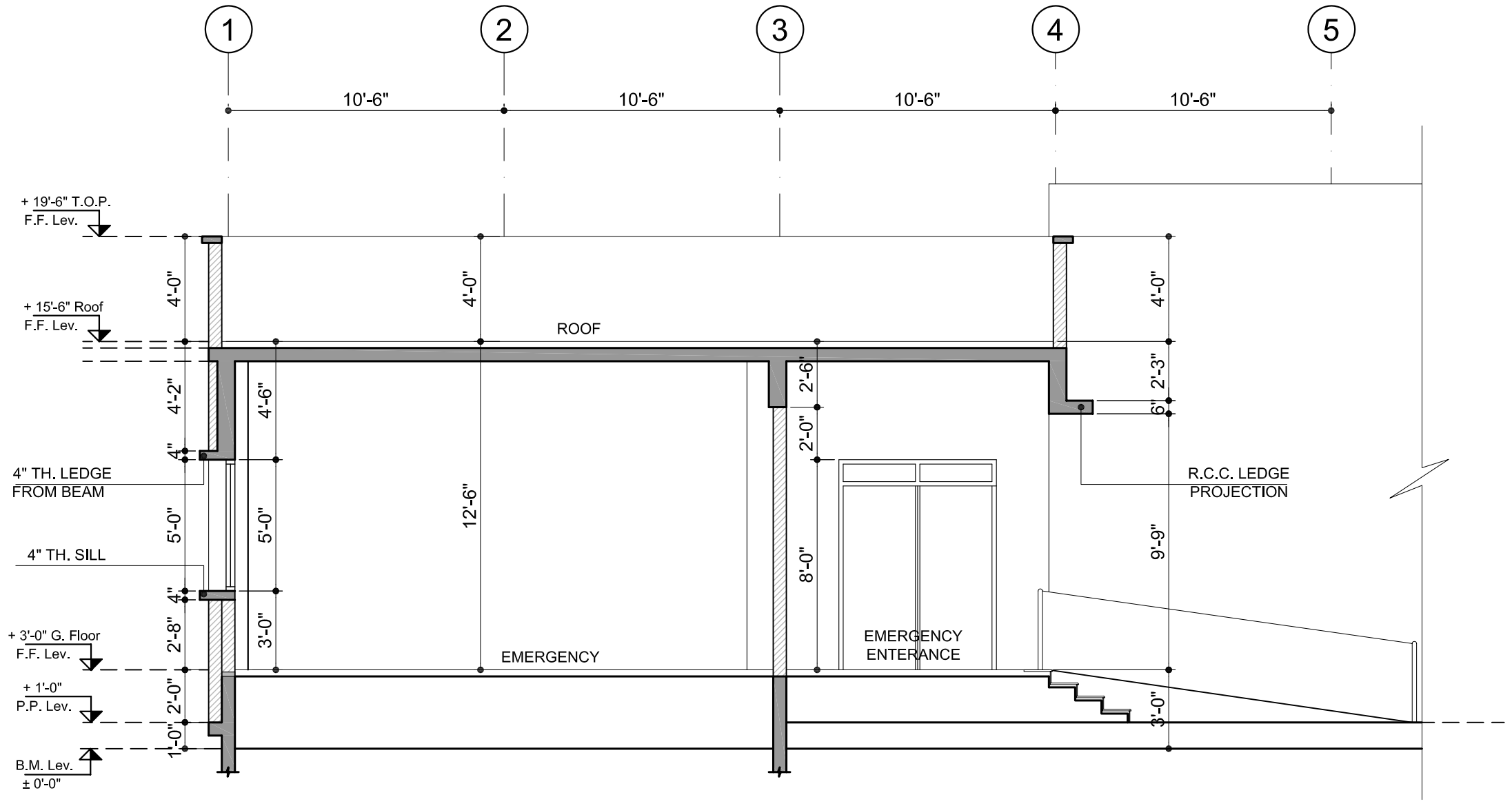
PROJECT CODE MCH	SCALE 3/16" = 1'-0"	JOB NO. P-1223
DRAWING NO. MCH-AR-401	REVISION 0	
DATE 28-04-2015	PLOT SCALE A3	



SECTION - A

CONSULTANTS
Atif nazar associates
 CONSULTING ENGINEERS, ARCHITECTS
 PLANNERS AND PROJECT MANAGERS.
 A-3 & 4, SB-14, BLOCK NO-13-B,
 GULSHAN-E-IOBAL, KARACHI,
 P.H. 34820497 - 34982561

CLIENT
**Health Department,
 Government of Sindh**



SECTION - B

KEY PLAN

NO.	DATE	DESCRIPTION	REV. BY

DESIGN BY ARCH. NUZHAT	DRAWN BY NOMAN.A
CHECKED / CO-ORDINATED Atif Nazar	APPROVED BY -

PROJECT
**Mother & Children Hospital
 at Mirpur Sakro, Thatta**

TITLE
SECTION - B

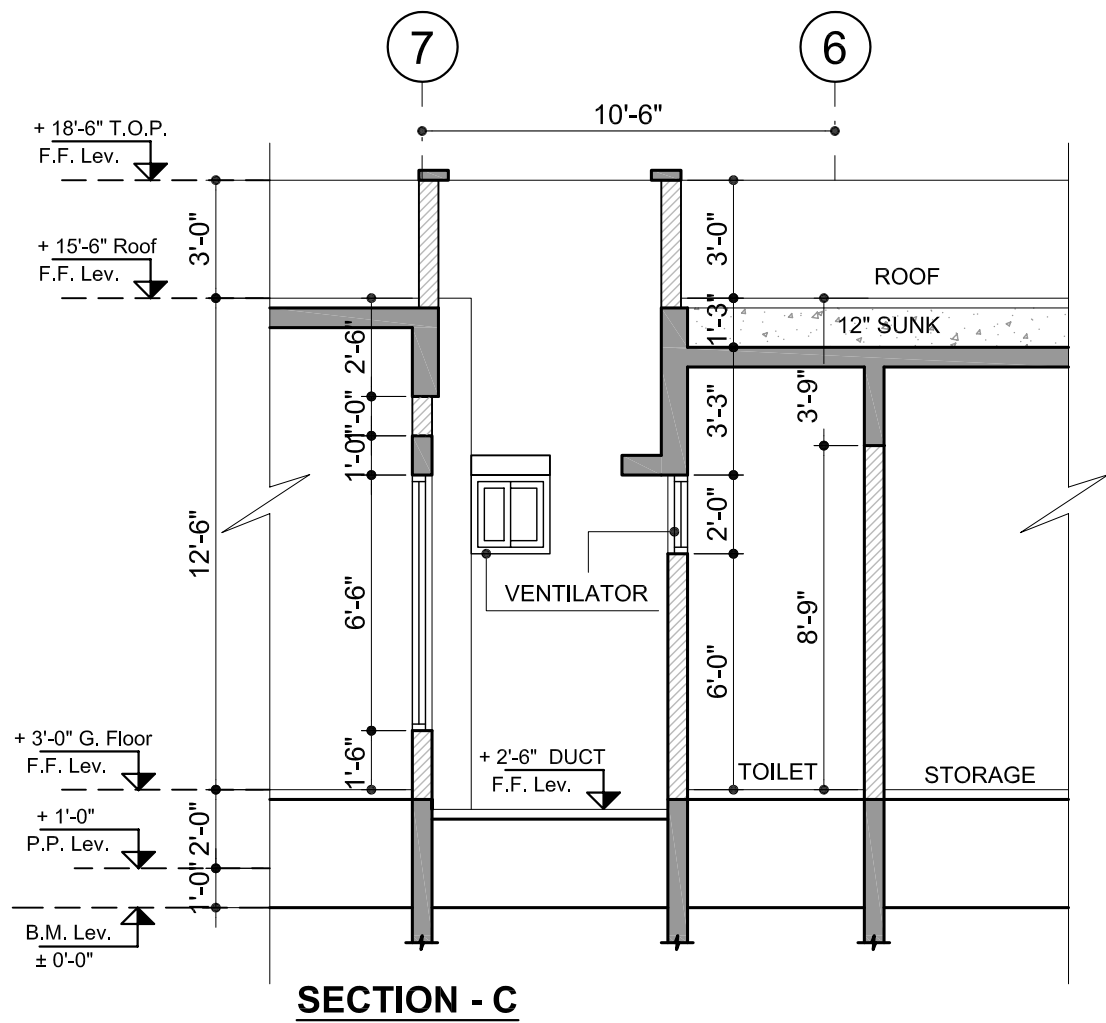
PROJECT CODE MCH	SCALE 3/16" = 1'-0"	JOB NO. P-1223
DRAWING NO. MCH-AR-402	REVISION 0	
DATE 28-04-2015	PLOT SCALE A3	

CONSULTANTS

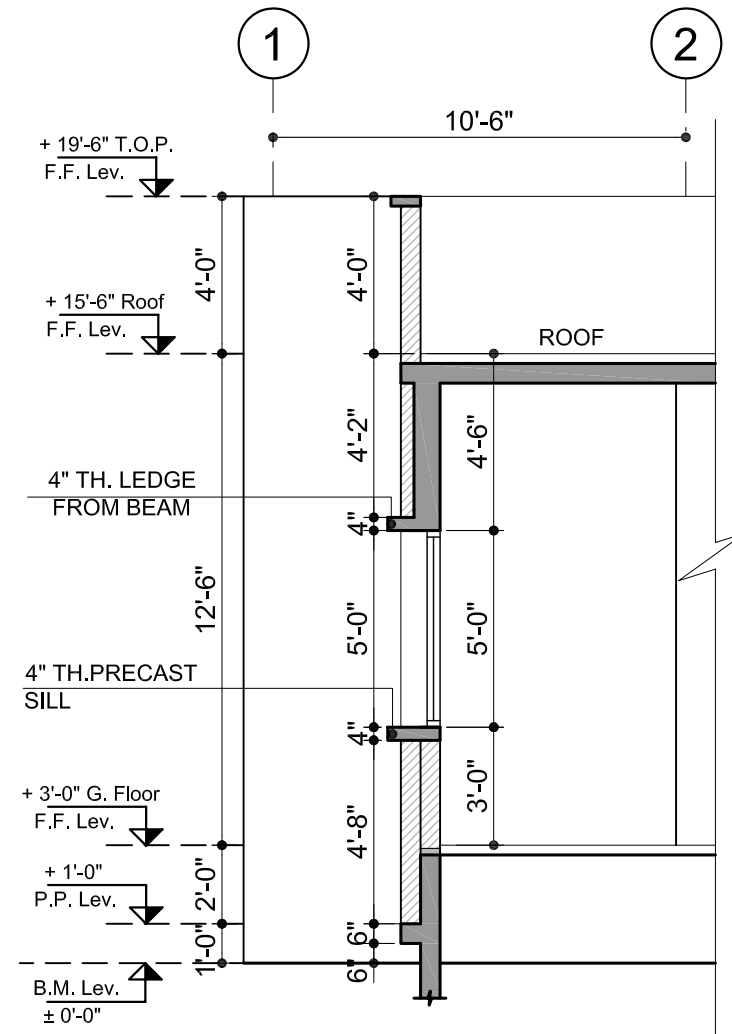
Atif nazar associates
 CONSULTING ENGINEERS, ARCHITECTS
 PLANNERS AND PROJECT MANAGERS.
 A-3 & 4, SB-14, BLOCK NO-13-B,
 GULSHAN-E-IOBAL, KARACHI,
 P.H. 34820497 - 34982561

CLIENT

**Health Department,
 Government of Sindh**



SECTION - C



SECTION - E

KEY PLAN

REVISION			
NO.	DATE	DESCRIPTION	REV. BY

DESIGN BY ARCH. NUZHAT	DRAWN BY NOMAN.A
CHECKED / CO-ORDINATED Atif Nazar	APPROVED BY -

PROJECT
**Mother & Children Hospital
 at Mirpur Sakro, Thatta**

TITLE
SECTION - C & E

PROJECT CODE MCH	SCALE 3/16" = 1'-0"	JOB NO. P-1223
DRAWING NO. MCH-AR-403	REVISION 0	
DATE 28-04-2015	PLOT SCALE A3	

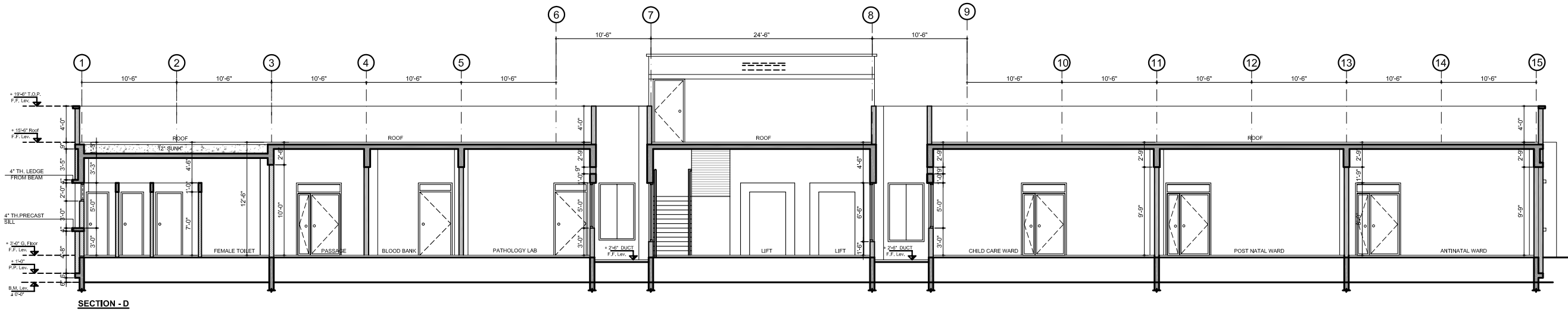
CONSULTANTS

Atif nazar associates

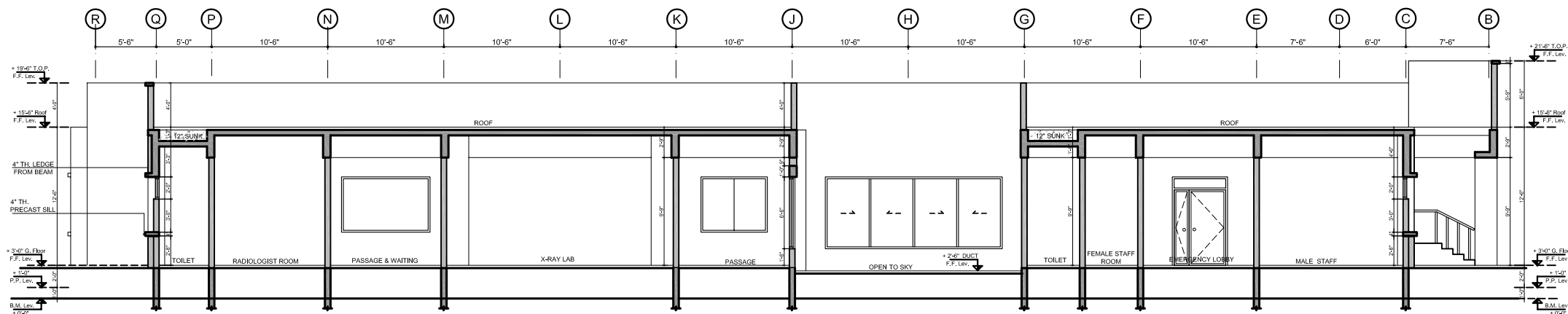
CONSULTING ENGINEERS, ARCHITECTS
 PLANNERS AND PROJECT MANAGERS.
 A-3 & 4, SB-14, BLOCK NO-13-B,
 GULSHAN-E-IOBAL, KARACHI,
 P.H. 34820497 - 34982561

CLIENT

**Health Department,
 Government of Sindh**



SECTION - D



SECTION - H

KEY PLAN

REVISION

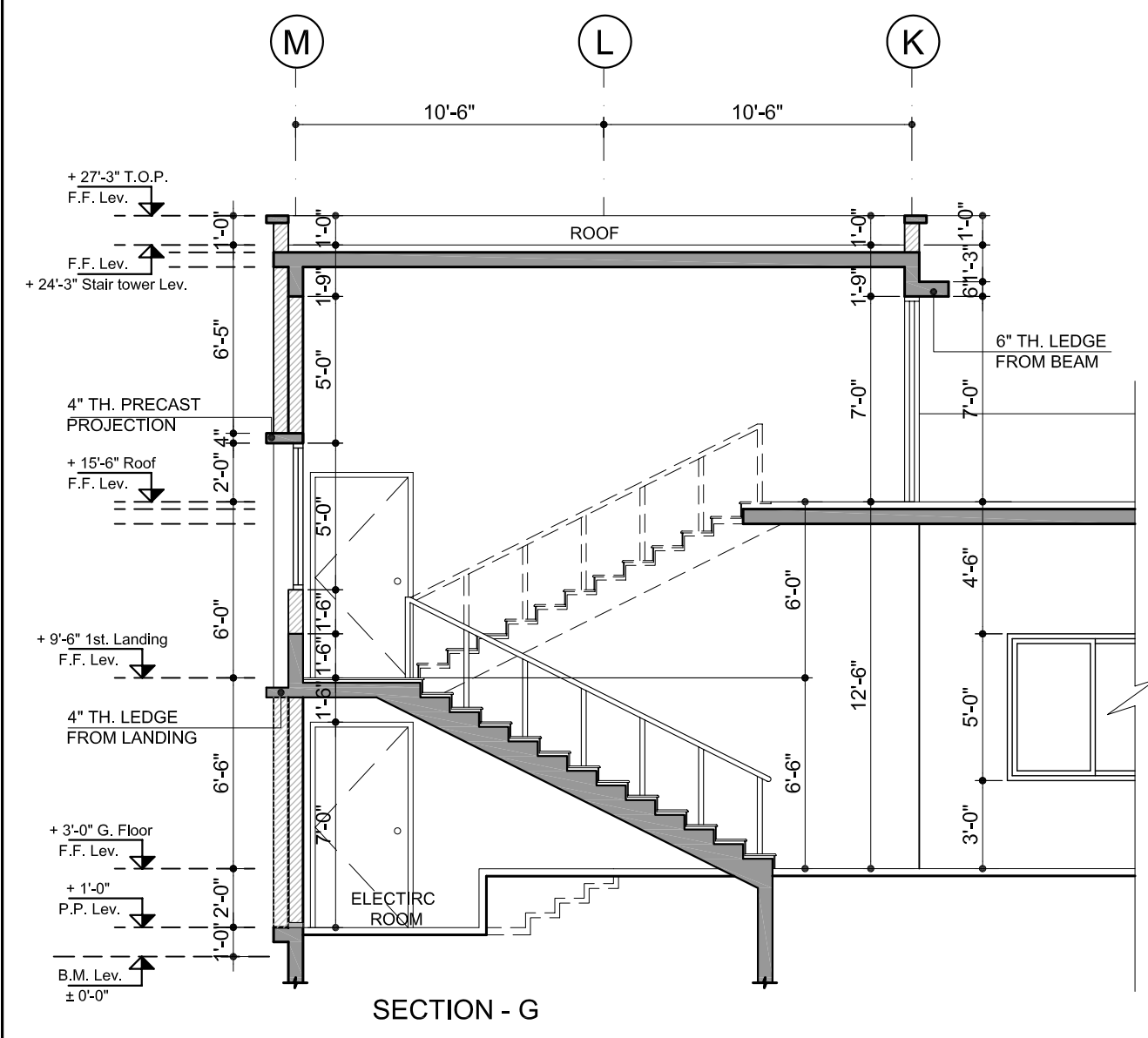
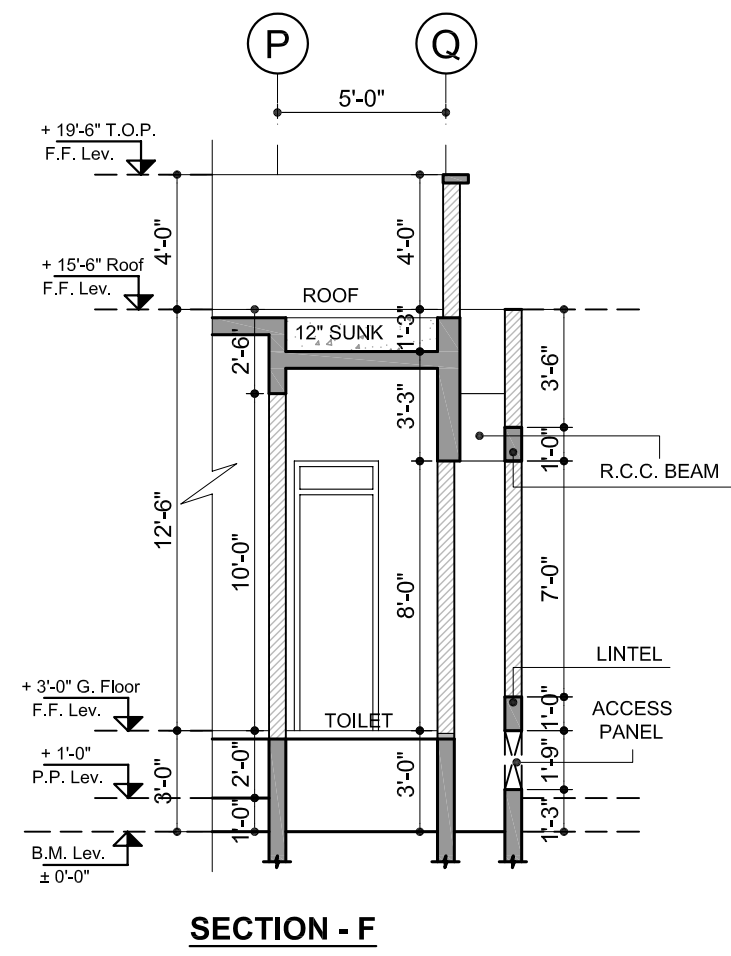
NO.	DATE	DESCRIPTION	REV.	BY

DESIGN BY ARCH. NUZHAT	DRAWN BY NOMAN.A
CHECKED / CO-ORDINATED Atif Nazar	APPROVED BY -

PROJECT
**Mother & Children Hospital
 at Mirpur Sakro, Thatta**

TITLE
SECTION - D & H

PROJECT CODE MCH	SCALE 3/16" = 1'-0"	JOB NO. P-1223
DRAWING NO. MCH-AR-404	REVISION 0	
DATE 28-04-2015	PLOT SCALE A3	



KEY PLAN

NO.	DATE	DESCRIPTION	REV. BY

DESIGN BY ARCH. NUZHAT	DRAWN BY NOMAN.A
CHECKED / CO-ORDINATED Atif Nazar	APPROVED BY -

PROJECT
**Mother & Children Hospital
 at Mirpur Sakro, Thatta**

TITLE
SECTION - F & G

PROJECT CODE MCH	SCALE 3/16" = 1'-0"	JOB NO. P-1223
DRAWING NO. MCH-AR-405	REVISION 0	DATE 28-04-2015
	PLOT SCALE A3	

CONSULTANTS

Atif nazar associates
 CONSULTING ENGINEERS, ARCHITECTS
 PLANNERS AND PROJECT MANAGERS.
 A-3 & 4, SB-14, BLOCK NO-13-B,
 GULSHAN-E-IOBAL, KARACHI,
 P.H. 34820497 - 34982561

CLIENT

**Health Department,
 Government of Sindh**



ELEVATION 01

KEY PLAN

NO.	DATE	DESCRIPTION	REV.	BY
-	-	-	-	-
-	-	-	-	-
-	-	-	-	-
-	-	-	-	-

DESIGN BY ARCH. NUZHAT	DRAWN BY NOMAN.A
CHECKED / CO-ORDINATED Atif Nazar	APPROVED BY -

PROJECT
**Mother & Children Hospital
 at Mirpur Sakro, Thatta**

TITLE
ELEVATIONS -1

PROJECT CODE MCH	SCALE NTS	JOB NO. P-1223
DRAWING NO. MCH-AR-301	REVISION 0	
DATE 28-04-2015	PLOT SCALE A3	



ELEVATION 02

CONSULTANTS

Atif nazar associates

CONSULTING ENGINEERS, ARCHITECTS
 PLANNERS AND PROJECT MANAGERS.
 A-3 & 4, SB-14, BLOCK NO-13-B,
 GULSHAN-E-IOBAL, KARACHI,
 P.H. 34820497 - 34982561

CLIENT

**Health Department,
 Government of Sindh**

KEY PLAN

REVISION			
NO.	DATE	DESCRIPTION	REV. BY
-	-	-	-
-	-	-	-
-	-	-	-
-	-	-	-

DESIGN BY	DRAWN BY
ARCH. NUZHAT	NOMAN.A
CHECKED / CO-ORDINATED	APPROVED BY
Atif Nazar	-

PROJECT
**Mother & Children Hospital
 at Mirpur Sakro, Thatta**

TITLE
ELEVATIONS -2

PROJECT CODE	SCALE	JOB NO.
MCH	NTS	P-1223
DRAWING NO.	REVISION	
MCH-AR-302	0	
DATE	PLOT SCALE	
28-04-2015	A3	

CONSULTANTS

Atif nazar associates

CONSULTING ENGINEERS, ARCHITECTS
 PLANNERS AND PROJECT MANAGERS.
 A-3 & 4, SB-14, BLOCK NO-13-B,
 GULSHAN-E-IOBAL, KARACHI,
 P.H. 34820497 - 34982561

CLIENT

**Health Department,
 Government of Sindh**



ELEVATION 03

KEY PLAN

NO.	DATE	DESCRIPTION	REV.	BY
-	-	-	-	-
-	-	-	-	-
-	-	-	-	-

DESIGN BY	DRAWN BY
ARCH. NUZHAT	NOMAN.A
CHECKED / CO-ORDINATED	APPROVED BY
Atif Nazar	-

PROJECT
**Mother & Children Hospital
 at Mirpur Sakro, Thatta**

TITLE
ELEVATIONS -3

PROJECT CODE	SCALE	JOB NO.
MCH	NTS	P-1223
DRAWING NO.	REVISION	
MCH-AR-303	0	
DATE	PLOT SCALE	
28-04-2015	A3	



ELEVATION 04

CONSULTANTS

Atif nazar associates
 CONSULTING ENGINEERS, ARCHITECTS
 PLANNERS AND PROJECT MANAGERS.
 A-3 & 4, SB-14, BLOCK NO-13-B,
 GULSHAN-E-IOBAL, KARACHI.
 P.H. 34820497 - 34982561

CLIENT

**Health Department,
 Government of Sindh**

KEY PLAN

REVISION

NO.	DATE	DESCRIPTION	REV. BY
-	-	-	-
-	-	-	-
-	-	-	-

DESIGN BY: ARCH. NUZHAT
 DRAWN BY: NOMAN.A
 CHECKED / CO-ORDINATED: Atif Nazar
 APPROVED BY: -

PROJECT
**Mother & Children Hospital
 at Mirpur Sakro, Thatta**

TITLE
ELEVATIONS -4

PROJECT CODE	SCALE	JOB NO.
MCH	NTS	P-1223
	DRAWING NO. MCH-AR-304	REVISION 0
	DATE 28-04-2015	PLOT SCALE A3